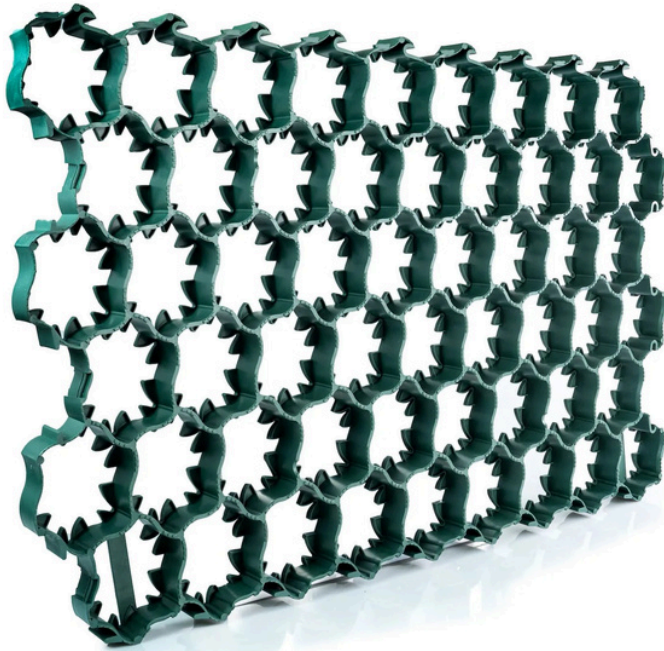


GRIDFORCE PARK30

GROUND REINFORCEMENT GRID



10 year product guarantee ◀

Manufactured from 100% recycled LDPE ◀

Fully recyclable ◀

Patented interlocking system ◀

Large quantities stocked with a turnaround of 2-5 days ◀

SuDS compliant ◀

Operating temperature of -35°C to 85°C ◀

APPLICATIONS

Recommended for: Gravel driveways, car parking, pathways, event parking, caravan parks, shed bases and lawn reinforcement

SPECIFICATIONS

Maximum load-bearing capacity (empty pavers):

Axle loading: 10 tonnes

Up to 1000 tonnes/m² (Filled)

- **Size:** 390mm x 580mm x 30mm
- **Detail:** 54 honeycombs of 70mm x 70mm per tile
- **Wall thickness:** 2.5mm
- **Weight:** 0.75kg per tile
- **Packaging:** 4 tiles (2x2) = 0.9m², 80 layers of 4 tiles = 72m², 320 tiles per pallet.
- **Dimensions of a pallet:** 780mm x 1160mm x 2550mm
- **Material:** LDPE – Low Density Polyethylene, 100% recycled, withstands frost and UV radiation, natural stability: resists extreme temperatures -30 to 85°C

0115 965 7303

sales@gridforce.co.uk

Industrial Estate South, Park Road, Calverton, Nottinghamshire, NG14 6BP



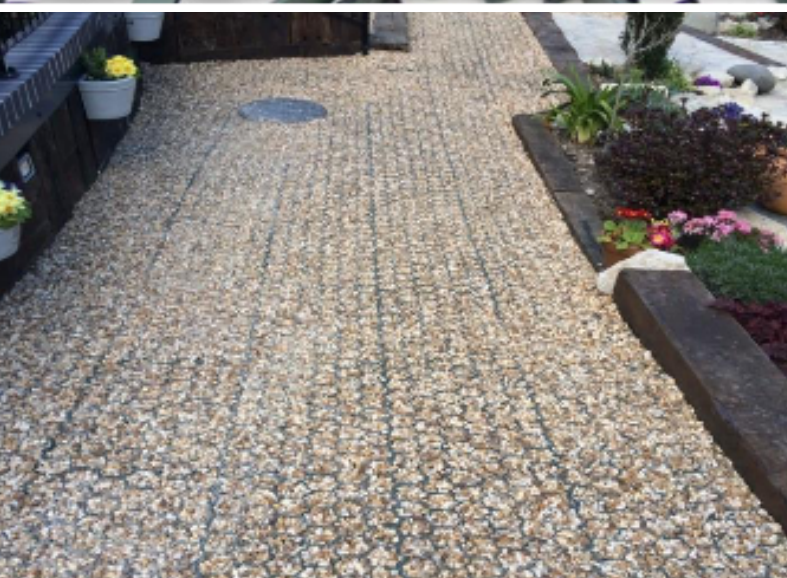
GRIDFORCE PARK30

GROUND REINFORCEMENT GRID



CERTIFICATIONS

- Declaration of conformity for CE Marking
- TUV Nord – ISO 9001
- DIN 38412 – Neutral for the environment, lifespan higher than 10 years
- DIN 4102 – Approval emergency access routes, fire resistance
- DIN 1072 – Approval for 20 tonne axle load, driveways, road extensions, bridges
- DIN IN ISO 124 and B125 – Approval for car parks, access roads & storage areas
- Compliance of Park M - disabled access



0115 965 7303

sales@gridforce.co.uk

Industrial Estate South, Park Road, Calverton, Nottinghamshire, NG14 6BP

